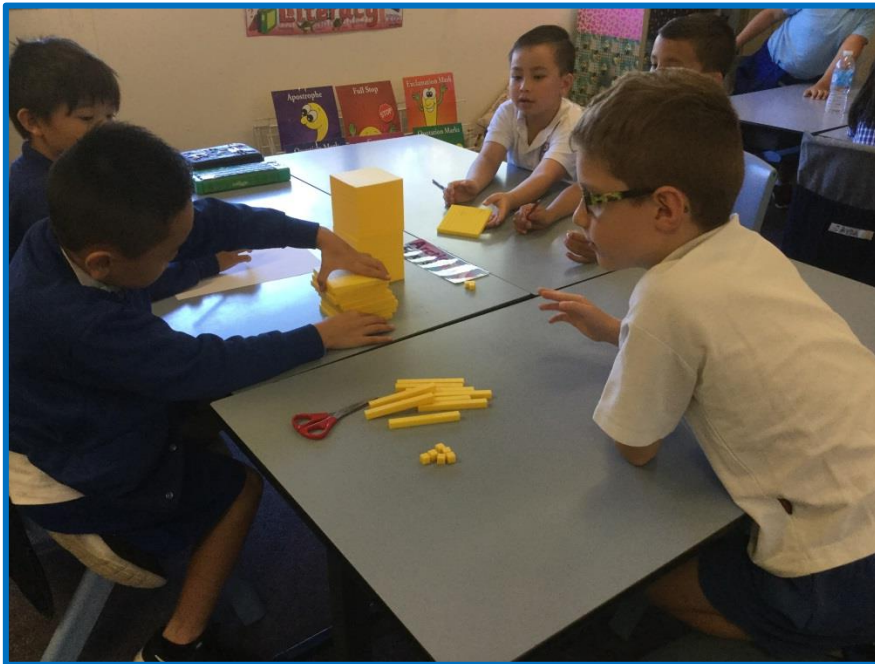


# CAIRNLEA PARK PRIMARY SCHOOL No 1434



## Grade 3 Parent Information 2017

Dear Parents/Guardians,

The grade 3 teachers have compiled this general information booklet outlining our class programs and arrangements for 2017. We hope this will help keep parents informed. If you have any queries about this information or any other aspect of your child's class program, please contact your child's teacher and make an appointment before or after school.

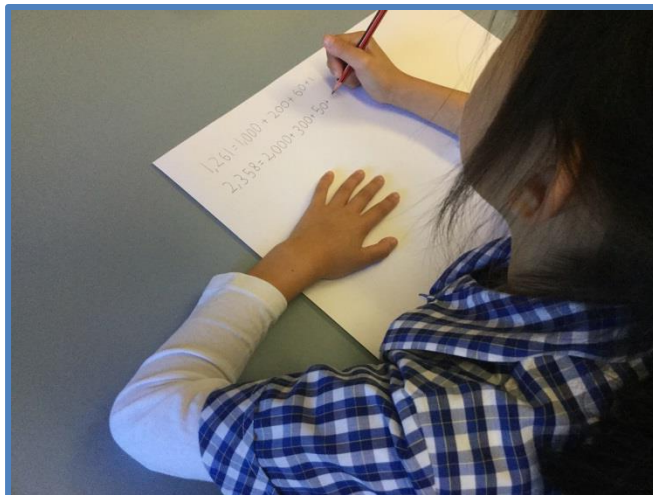
### Term Dates:

**Term 1:** 31<sup>st</sup> January - 31<sup>st</sup> March

**Term 2:** 18<sup>th</sup> April (Tuesday) - 30<sup>th</sup> June

**Term 3:** 17<sup>th</sup> July - 22<sup>nd</sup> September

**Term 4:** 9<sup>th</sup> October - 22<sup>nd</sup> December



### Class Teachers and Room Numbers:

<b>Year 3 Coordinator</b>	<b>Mrs Lyndal Haynes</b>	<b>WDR 13/14</b>
Grade 3DL	Mrs Dianna Lazarevski	Room 17
Grade 3MW	Mr Morgan Williams	Room 18
Grade 3GM	Mrs Gail McNamara	Room 19
Grade 3CC	Miss Chantel Crutchfield	Room 20
Grade 3BD	Miss Blair Davidson	Room 27

### Victorian Curriculum

Each year level has developed a program that will cater to the needs of students while encompassing all aspects of the Victoria Curriculum.

In addition to a major focus on Literacy and Numeracy, other areas of the curriculum covered include; Humanities - History, Geography and Economics, Science and The Arts. These form the basis of our Inquiry Based Learning units of work in which students investigate a question, issue, problem or idea. Inquiry also incorporates the areas of Interpersonal Development, Personal Learning, Civics and Citizenship and Health and Physical Education. Information and Communication Technology is integrated across all curriculum areas.

Through comprehensive term and weekly planning, teachers cater for students at their level of need. This involves providing extra support to students who require it as well as extending those who need further challenges.

## English

English includes the areas of reading and viewing, speaking and listening, and writing. The school follows a comprehensive assessment schedule to evaluate each student's progress and plan programs to meet their needs. In grade three students participate in two hours of Literacy each day. During these sessions students are involved in a range of activities to support their literacy development.

## Mathematics

Mathematics includes the areas of number and algebra, measurement and geometry, and statistics and probability. Teachers will plan a variety of 'hands on' activities using a wide range of resources and equipment available in the school.

## Specialist Program

This year the children will have specialist lessons in:

Physical Education	Mrs Tegan deMan and Mrs Naomi Young
Performing Arts/Music	Mrs Emma Pisano and Mrs Kim Pearce
Art	Mrs Ele Newham
LOTE (Italian)	Mr Vincent Licata



## P.E.

It is important that students wear appropriate footwear for P.E. as children are not allowed to wear school shoes in the gym when participating in physical activities.

## Visual Arts

Paint, clay, glue and other substances may be used in art; therefore, your child will require an art smock that is suitable for protecting clothing. Please make sure that your child's art smock is clearly named.

## Library

Classroom teachers will be taking students to the school's library once a week. Children will need to bring a suitable bag for library borrowing. Please ensure that the school's books are looked after and that they are returned as soon as possible.

## Science, Technology and Health

During 2017, the subjects of Science, Technology and Health will be taught within the classroom. Some informal rotations of the grade threes may take place when teaching these subjects so that teachers are able to share their expertise with other grades.



## Homework

Children will be given homework tasks to complete each week. Your child should be able to complete their homework activities independently, however we encourage your child to discuss their tasks with you. We also encourage you to assist your child by establishing a homework routine. Please refer to the homework policy which is included in this booklet.

**Reading** - Children have regular independent reading time at school and may use books from the classroom, borrowed from the library or bring books or other reading material of interest from home. Students are expected to read regularly at home at least 5 times each week. Students will take home reading material from the classroom to read at home each night. Students choose their books independently and should be ensuring that the reading material that they take home can be 'easily' read. It is not expected that children read an entire book each night; a few pages or a chapter is sufficient (approx. 20 minutes of reading per night). Students **must** bring their 'Student Diary' to school each day so teachers can monitor the reading that has taken place the previous night. Children should also be encouraged to read local newspapers at home as topical events may be discussed in class.

**Spelling** - Children have words to learn each week. They will practise these at school and at home. Testing is usually done once a week. Words come from lists such as: essential word lists, commonly misspelt words list, blend focus lists, inquiry investigation word lists, children's own writing and extended word sources.

## Early Bird Reading

This is a program for students who need extra assistance with reading. It is available before school at 8.40am located in the library. Everyone is welcome.



## Communication

Communication is very important to us at Cairnlea Park Primary School.

Important information will appear in the fortnightly newsletter which is distributed electronically using the Tiqbiz system (information about accessing Tiqbiz is available from the school website or the office). Further information about classroom activities and events will periodically be posted to class blogs.

If you have any concerns or queries, please arrange to see your child's teacher before or after school. It is best to arrange a time, particularly for longer discussions, so that this doesn't clash with yard duty, bringing the class inside or other commitments. Please keep teachers informed of issues, such as major changes at home or illness, which may be affecting your child.

## Emergency Contact Information

It is most important that the information supplied is completely accurate and is **kept up to date**. Please notify us immediately of any changes to address or phone details so that we can contact you should the need arise.

## Absences

All students are expected to attend school every day. It is important that your child attends school regularly and if they are absent, please inform the school through telephoning, COMPASS or TIQBIZ with the reason for this absence. The department check our records each year for any unexplained absences.

## Uniforms and Hats

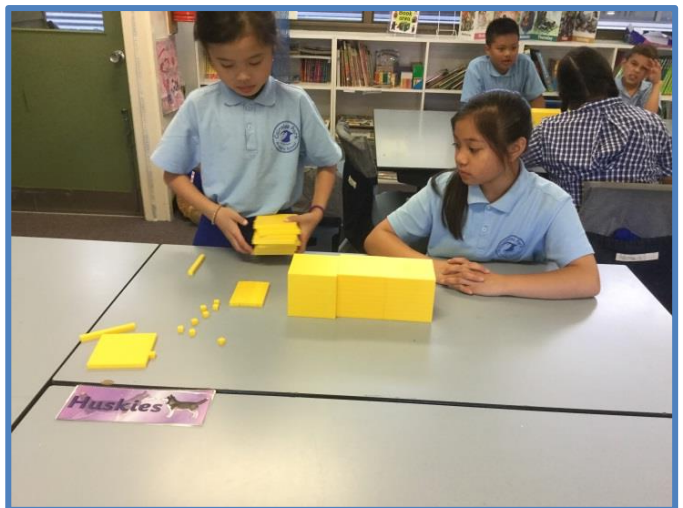
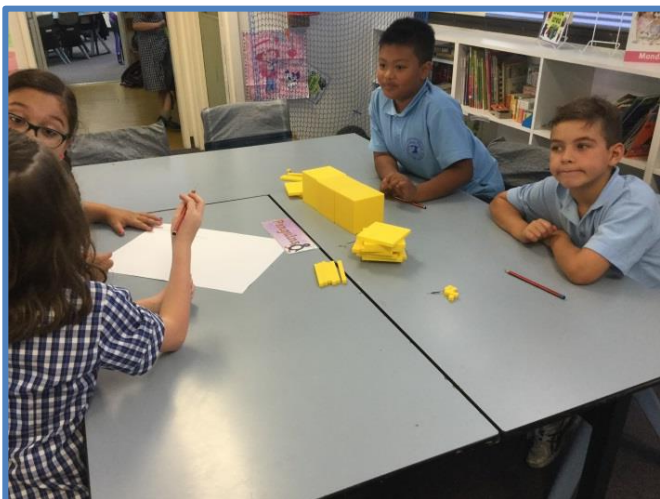
Students are expected to wear full school uniform every day. If they are unable to, please send a note explaining why they aren't wearing their uniform and when they will be in uniform again. School hats are to be worn in Term One and Term Four. The school has adopted the 'No Hat, No Play' policy. The uniform policy has been included in this booklet for you to refer to.

## Lunch Orders

When ordering lunch students need to pre-order their food. Their order should be on a paper bag, clearly labelled with money included. Children are not to buy food from the canteen for their lunch, as counter sales are only for snacks and the canteen does not make extra lunch items.

## Parental Help

Parents helping out at school are of great benefit to the children. If you are able to help out, there are a variety of ways that you can assist in the classroom. Please see your child's teacher as they will be grateful for any assistance you can give. You may also wish to become a member of our School Council.



## Excursion and Incursions

The table below outlines the excursion and other special events taking place during the year. We hope this helps families with their time and budget planning. Some dates and costs (as indicated) are yet to be finalised but approximations have been given. Excursions are an important part of the curriculum and enrich the learning potential of each child, and as such it is **expected that every child will attend**.

### Grade 3 Events - 2017 (subject to change)

TERM	INQUIRY/ INTEGRATED STUDIES	INCURSIONS, EXCURSIONS AND SPECIAL EVENTS	APPROXIMATE COST
ONE	Celebrations and Food	Parent/Teacher Information Exchange Multicultural Day Italian Day Incursion School Photos	Bring a plate Included in school levy TBA
TWO	Solids, Liquids and Heat	ANZAC Commemoration Life Education Van - Incursion Smart Start Financial Maths Book Fair Incursion Education Week Walkathon June Parent/Teacher Interviews Science Incursion	No cost Included in school levy No cost School fundraiser  No cost School fundraiser  Included in school levy
THREE	My Place in the World	Book Week Science Week Numeracy & Literacy Week	No cost No cost No cost
FOUR	Living Things and Life Cycles	Inquiry based excursion (TBA) Family Fun Day End of Year Concert Sports Carnival	Approx. cost \$30-\$40 School fundraiser No cost No cost

WE HOPE THIS INFORMATION HAS BEEN VALUABLE.

KIND REGARDS,

**GRADE 3 STAFF & SPECIALISTS.**

# Homework Policy

This policy has been reviewed in accordance with "Homework Guidelines" Dept of Education and Training.

## Rationale:

- Homework helps students by complementing and reinforcing classroom learning, fostering good lifelong learning and study habits, and providing an opportunity for students to be responsible for their own learning.
- Homework provides further opportunities for parents to participate in their child's education. Parents, in partnership with the school, should encourage their children to establish good homework routines from early primary school.

## Aims:

- Homework should be designed to reinforce concepts taught in the classroom, not to introduce new concepts and be purposeful, meaningful and relevant to the curriculum.
- Homework tasks should encourage students to develop and maintain regular and independent homework habits and routines.
- Homework should be appropriate to the student's skill level and age and be interesting, challenging and, where appropriate, open ended.

## Implementation:

### **Early Years (Prep - 4)**

Prep to Year 4 homework should not be seen as a chore.

Homework will:

- enable the extension of class work by practising skills or gathering extra information or materials
- mainly consist of daily reading to, with, and by parents/caregivers or older siblings

This will generally not exceed 30 minutes a day.

### **Middle Years (Years 5 & 6)**

Years 5 & 6 homework:

- should include daily independent reading
- may include extension of class work, projects and assignments, essays and research.

This will generally range from 30 - 45 minutes a day at Year 5 & 6.

## **Expectations**

Teachers:

- Homework will be corrected and feedback given as appropriate.
- Parents will be notified through reports, parent/teacher interviews or as appropriate when homework is not being submitted on a regular basis.

## **Parents and Care Givers:**

- Are asked to sign their child's reading and homework tasks.
- Are encouraged to assist their children but the tasks **should be completed by the child**.
- Are encouraged to give feedback to the class teacher regarding homework concerns.

## Evaluation:

- *Homework policy to be distributed to staff at the beginning of each year.*
- Homework policy to be published on the school's website and included in each Year Level's Information Booklets..
- Homework policy to be reviewed as part of the school's four year policy review cycle.

**\* This policy was last ratified by school council in June 2015.**

# Uniform Policy

## Rationale:

- Students dressed in school uniform gain a sense of belonging to the school.
- The cost of providing school uniform is almost always cheaper than providing an assortment of casual clothes.
- School uniform is designed to be practical for the range of activities undertaken at the school.
- All students are required to wear uniform, reducing competition in fashion dressing. All students, regardless of socio economic circumstance can feel equally part of the school community.
- Staff and parents will have an important role in the positive encouragement of the wearing of school uniform.

## Implementation:

- If a child is unable to wear school uniform on a particular day, parents should advise the class teacher in writing, indicating the reasons and likely duration.
- Parents will be able to obtain the uniform from the school's uniform supplier, the school's preloved uniform stock or commercial outlets.
- The Uniform Policy should be read in conjunction with the Sunsmart Policy.
- The Uniform Policy will be published each year in the Family Information Booklet.
- A parent/guardian may contact the principal requesting the student be exempted from wearing uniform, including reasons for seeking exemption. eg. health or religious reasons.
- Where there are frequent occurrences of a child being out of uniform, contact will be made with parents by the Student Engagement Coordinator to seek their support in ensuring the Uniform Policy will be adhered to.
- All students are required to wear the uniform as listed below:

<i>Item</i>	<b>Description</b>	<b>Colour</b>	<i>Item</i>	<b>Description</b>	<b>Colour</b>
<b>Shirts</b>	Polo shirt -short/long sleeve Skivvy	Pale blue or white  Pale blue or white	<b>Shoes and socks</b>	Runners School shoes/boots Sandals (toe enclosed) Socks	Black or white Black Black or white Grey, white
<b>Tops</b>	Windcheater Hooded Windcheater Bomber Jacket	Royal blue with School Logo	<b>Hats</b>	Legionnaire/ Bucket	Royal blue
<b>Bottoms</b>	Track pants Boot leg pants Leggings - to be wore under dresses only (not on their own) Shorts/Skorts Long/short cargo or school pants	Royal blue Royal blue White or black  Royal blue Grey	<b>Hair</b>	Tied back if touching shoulders. <i>Note: To assist in the prevention of the spread of head lice.</i>	Blue or white ribbons, bands or hair ties
<b>Dresses</b>	School Summer Dress  Winter Tunic	Colour 8160 Royal blue, white and gold check Style T001	<b>Jewellery</b>	Studs/sleepers only <i>Note: For health and safety reasons, these can be worn only in ears.</i> Watch	

\*School council last modified this policy in October 2016.